

# HOWARD COUNTY

## Residential Market Report

# HOUSING REPORT

## Single Family Homes

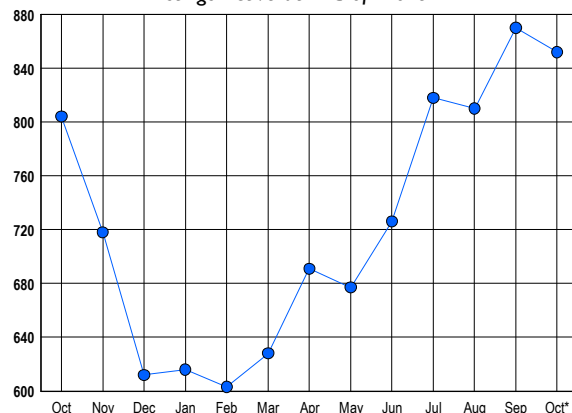
October 2013

### LISTINGS

Prices Range	New This Month			Total Actives		
	2013	2012	% Change	2013	2012	% Change
0 - 149,999	0	1	-100.0	3	6	-50.0
150,000 - 199,999	7	11	-36.4	9	14	-35.7
200,000 - 299,999	55	48	14.6	95	95	0.0
300,000 - 399,999	81	55	47.3	154	136	13.2
400,000 - 499,999	64	44	45.5	129	119	8.4
500,000 - 599,999	34	42	-19.0	112	105	6.7
600,000 - 699,999	36	41	-12.2	103	125	-17.6
700,000 - 799,999	26	21	23.8	77	75	2.7
800,000 - 899,999	10	7	42.9	51	32	59.4
900,000 - 999,999	5	6	-16.7	35	14	150.0
1,000,000 - 1,249,999	5	8	-37.5	35	40	-12.5
1,250,000 - 1,499,999	4	2	100.0	24	23	4.3
1,500,000 +	5	4	25.0	25	20	25.0
<b>TOTALS</b>	<b>332</b>	<b>290</b>	<b>14.5</b>	<b>852</b>	<b>804</b>	<b>6.0</b>

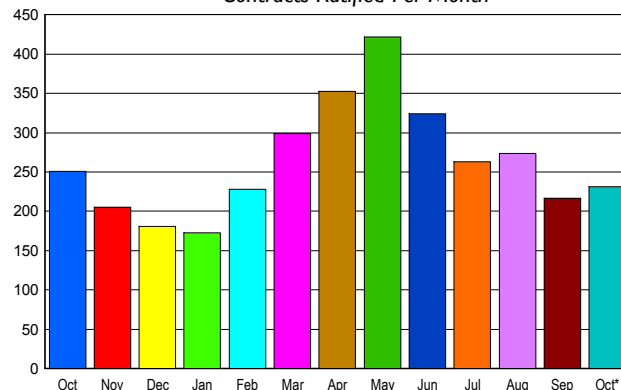
### INVENTORY TREND

Listings Active at End of Month



### SALES TREND

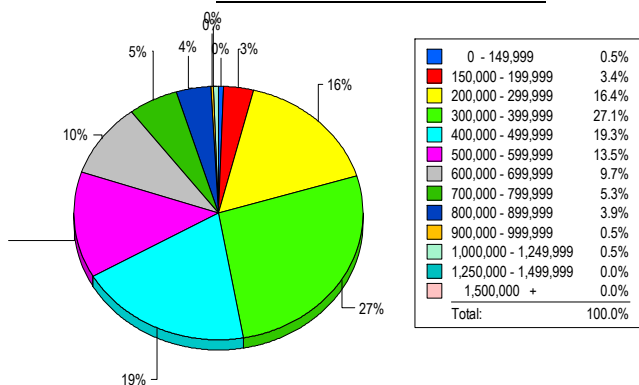
Contracts Ratified Per Month



### CONTRACTS

Price Range	New This Month			Year-To-Date		
	2013	2012	% Change	2013	2012	% Change
0 - 149,999	2	4	-50.0	17	25	-32.0
150,000 - 199,999	5	12	-58.3	60	112	-46.4
200,000 - 299,999	48	60	-20.0	445	527	-15.6
300,000 - 399,999	61	50	22.0	612	556	10.1
400,000 - 499,999	45	41	9.8	486	489	-0.6
500,000 - 599,999	28	30	-6.7	367	333	10.2
600,000 - 699,999	16	28	-42.9	267	212	25.9
700,000 - 799,999	12	13	-7.7	154	105	46.7
800,000 - 899,999	6	9	-33.3	74	54	37.0
900,000 - 999,999	5	1	400.0	33	29	13.8
1,000,000 - 1,249,999	1	2	-50.0	27	30	-10.0
1,250,000 - 1,499,999	2	1	100.0	8	8	0.0
1,500,000 +	0	0	0.0	7	9	-22.2
<b>TOTALS</b>	<b>231</b>	<b>251</b>	<b>-8.0</b>	<b>2557</b>	<b>2489</b>	<b>2.7</b>

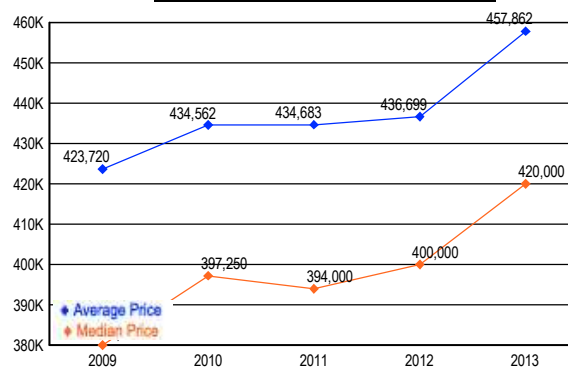
### MARKET BY PRICE RANGE



### SETTLEMENTS

Price Range	New This Month			Year-to-Date		
	2013	2012	% Change	2013	2012	% Change
0 - 149,999	1	1	0.0	11	24	-54.2
150,000 - 199,999	7	10	-30.0	61	90	-32.2
200,000 - 299,999	34	41	-17.1	431	488	-11.7
300,000 - 399,999	56	41	36.6	572	501	14.2
400,000 - 499,999	40	30	33.3	476	439	8.4
500,000 - 599,999	28	22	27.3	341	315	8.3
600,000 - 699,999	20	11	81.8	253	171	48.0
700,000 - 799,999	11	6	83.3	142	88	61.4
800,000 - 899,999	8	2	300.0	62	41	51.2
900,000 - 999,999	1	2	-50.0	20	25	-20.0
1,000,000 - 1,249,999	1	2	-50.0	19	26	-26.9
1,250,000 - 1,499,999	0	1	-100.0	7	5	40.0
1,500,000 +	0	0	0.0	8	8	0.0
<b>TOTALS</b>	<b>207</b>	<b>169</b>	<b>22.5</b>	<b>2403</b>	<b>2221</b>	<b>8.2</b>

### AVERAGE & MEDIAN PRICE



DATA SOURCE: Metropolitan Regional Information Systems, Inc. (MRIS)

NOTES: Properties not listed through this Multiple Listing Service are not reflected. The term "sales" represents ratified purchase contracts. Current year information is preliminary and subject to revision. Current year-to-date contract information may not equal the sum of the monthly contract totals reported in