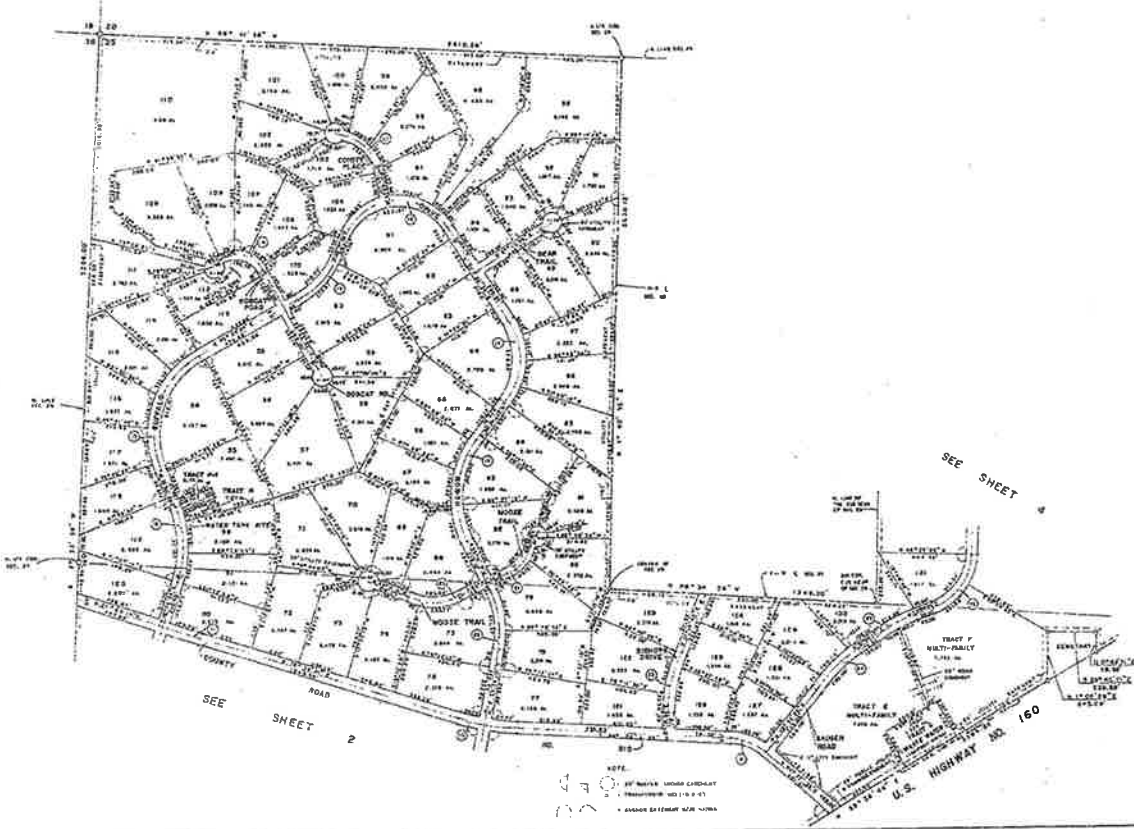


NAVAJO RANCH ESTATES

HUERFANO COUNTY, COLORADO



230

230

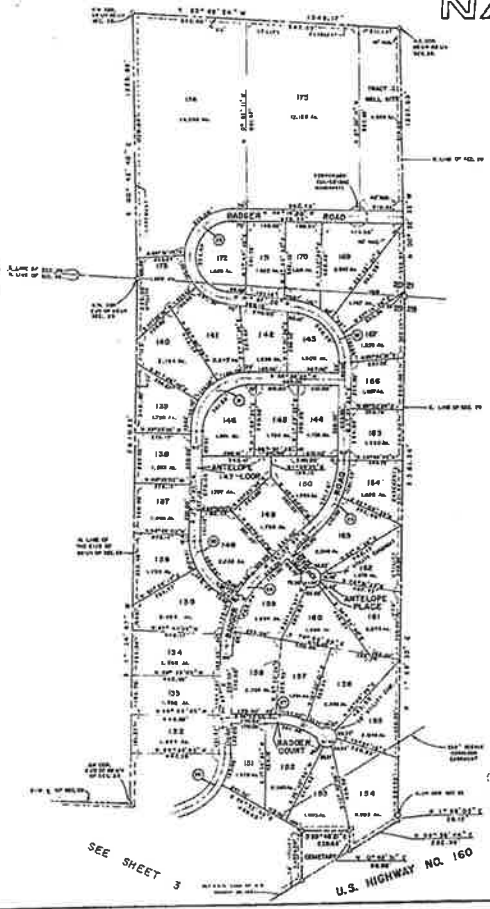
230

230

#a30

NAVAJO RANCH ESTATES

HUERFANO COUNTY, COLORADO



CURVE TABLE

NO.	Δ	RADIUS	LENGTH
1	14°00'54"	496.20'	193.62'
2	43°29'27"	559.81'	270.33'
3	78°42'25"	506.62'	494.90'
4	20°40'00"	312.24'	233.22'
5	23°13'10"	446.33'	194.74'
6	34°46'11"	334.25'	130.86'
7	27°20'13"	412.82'	194.24'
8	25°29'10"	443.17'	180.23'
9	36°00'00"	307.64'	193.33'
10	13°25'44"	1284.80'	232.40'
11	1°52'26"	4722.24'	200.24'
12	41°01'00"	332.00'	183.00'
13	22°48'20"	454.47'	632.00'
14	30°20'00"	300.00'	230.44'
15	37°04'00"	446.19'	283.64'
16	22°20'00"	256.00'	433.20'
17	27°30'00"	233.20'	206.22'
18	10°20'10"	394.25'	430.53'
19	22°20'00"	488.19'	353.22'
20	42°00'00"	323.00'	243.89'
21	48°20'00"	232.76'	188.90'
22	33°29'00"	446.47'	290.00'
23	19°46'00"	628.19'	431.00'
24	18°20'24"	1104.74'	248.40'
25	15°27'24"	738.50'	158.76'
26	24°23'11"	231.62'	330.67'
27	37°20'10"	271.50'	320.00'
28	47°21'00"	454.25'	374.81'
29	47°24'23"	453.39'	374.72'
30	42°00'15"	276.36'	290.00'
31	22°20'10"	233.19'	402.24'
32	22°20'10"	288.13'	331.54'
33	07°20'10"	204.22'	625.19'



SHEET 4 OF 4 SHEETS
 ADVANCED SURVEYING, INC.
 PUEBLO, COLORADO

ADVANCED SURVEYING
 230

ADVANCED SURVEYING
 230

ADVANCED SURVEYING
 230

ADVANCED SURVEYING
 230

#230