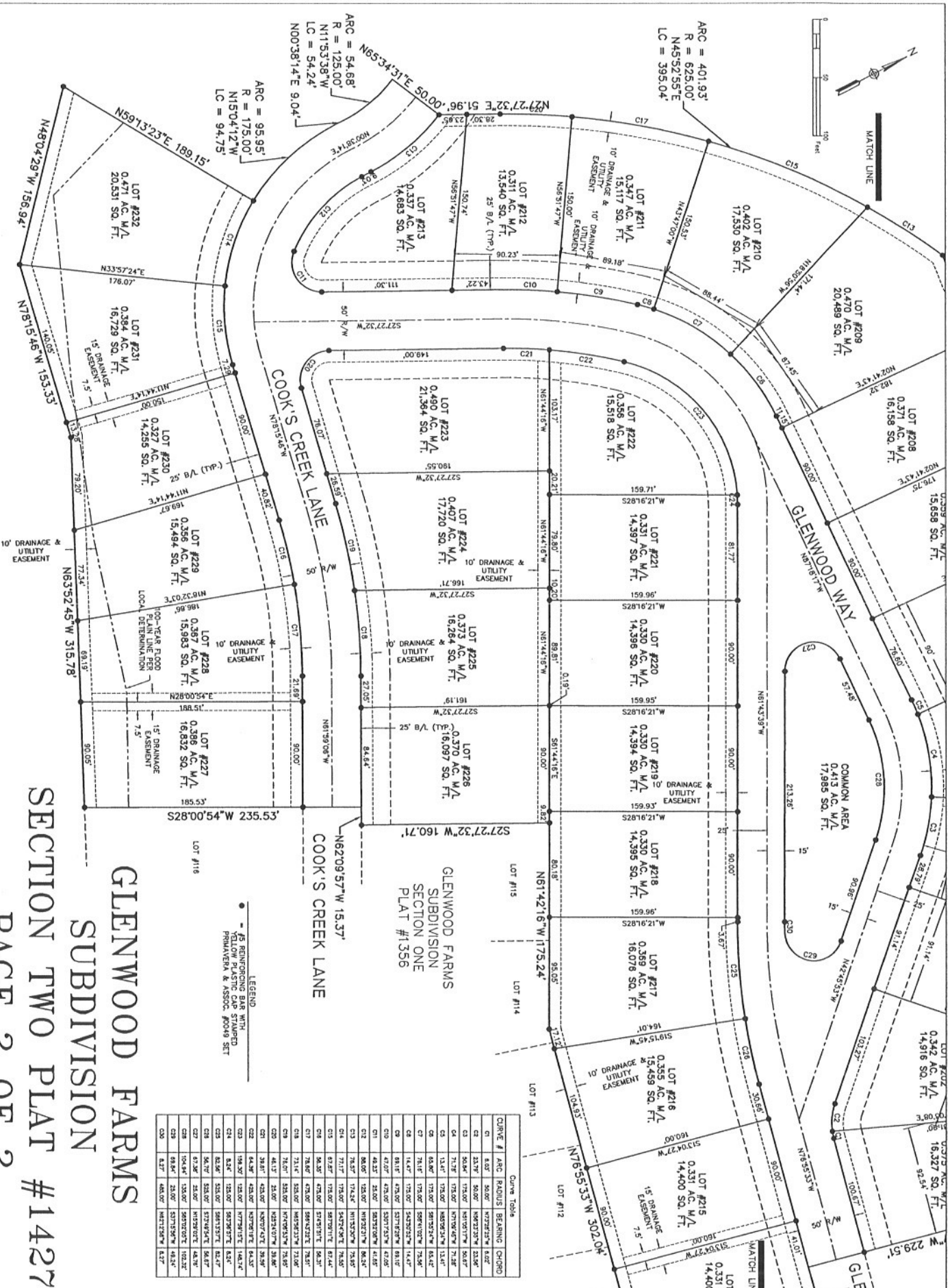






100  
50  
0  
50  
100  
FEET

MATCH LINE



**GLENWOOD FARMS  
SUBDIVISION  
SECTION TWO PLAT #1427**

CHORD #	ARC	RADIUS	BEARING	CHORD
C1	8.07	80.00	N78°22'32"E	8.07
C2	23.76	80.00	N78°22'32"E	23.76
C3	50.84	80.00	N78°22'32"E	50.84
C4	71.76	80.00	N78°22'32"E	71.76
C5	88.81	80.00	N78°22'32"E	88.81
C6	102.00	80.00	N78°22'32"E	102.00
C7	111.30	80.00	N78°22'32"E	111.30
C8	116.47	80.00	N78°22'32"E	116.47
C9	118.00	80.00	N78°22'32"E	118.00
C10	116.47	80.00	N78°22'32"E	116.47
C11	111.30	80.00	N78°22'32"E	111.30
C12	102.00	80.00	N78°22'32"E	102.00
C13	88.81	80.00	N78°22'32"E	88.81
C14	71.76	80.00	N78°22'32"E	71.76
C15	50.84	80.00	N78°22'32"E	50.84
C16	23.76	80.00	N78°22'32"E	23.76
C17	8.07	80.00	N78°22'32"E	8.07
C18	116.47	80.00	N78°22'32"E	116.47
C19	118.00	80.00	N78°22'32"E	118.00
C20	116.47	80.00	N78°22'32"E	116.47
C21	111.30	80.00	N78°22'32"E	111.30
C22	102.00	80.00	N78°22'32"E	102.00
C23	88.81	80.00	N78°22'32"E	88.81
C24	71.76	80.00	N78°22'32"E	71.76
C25	50.84	80.00	N78°22'32"E	50.84
C26	23.76	80.00	N78°22'32"E	23.76
C27	8.07	80.00	N78°22'32"E	8.07

LEGEND  
 - - - - - 1/2" REINFORCING BAR WITH  
 YELLOW PLASTIC CAP STAMPED  
 PRIMAVERA & ASSOC. #0049 SET

LOT #116  
 S28°00'54"W 235.53'

COOK'S CREEK LANE  
 N62°09'57"W 15.37'

GLENWOOD FARMS  
 SUBDIVISION  
 SECTION ONE  
 PLAT #1356

LOT #115  
 N61°42'16"W 1175.24'

LOT #114  
 N76°55'33"W 302.04'

LOT #113  
 N76°55'33"W 302.04'

LOT #112  
 N76°55'33"W 302.04'

LOT #111  
 N76°55'33"W 302.04'

LOT #110  
 N76°55'33"W 302.04'

LOT #109  
 N76°55'33"W 302.04'

LOT #108  
 N76°55'33"W 302.04'

LOT #107  
 N76°55'33"W 302.04'

LOT #106  
 N76°55'33"W 302.04'

LOT #105  
 N76°55'33"W 302.04'

LOT #104  
 N76°55'33"W 302.04'

LOT #103  
 N76°55'33"W 302.04'

LOT #102  
 N76°55'33"W 302.04'

LOT #101  
 N76°55'33"W 302.04'

LOT #100  
 N76°55'33"W 302.04'