



**HIGH STUDENT PERFORMANCE**

**Performance of Students in Each Grade on the ABCs End-of-Grade Tests**

Percentage of Students' Scores At or Above Grade Level

|                   | Grade 6 |       | Grade 7 |       | Grade 8 |       | OVERALL |       |
|-------------------|---------|-------|---------|-------|---------|-------|---------|-------|
|                   | Reading | Math  | Reading | Math  | Reading | Math  | Reading | Math  |
| <b>Our School</b> | 81.6%   | 87.0% | 73.4%   | 83.2% | 75.5%   | 84.0% | 76.8%   | 84.8% |
| <b>District</b>   | 79.8%   | 84.9% | 73.9%   | 84.3% | 76.6%   | 85.6% | 77.4%   | 86.4% |
| <b>State</b>      | 75.2%   | 80.5% | 68.2%   | 81.1% | 71.1%   | 85.2% | 71.2%   | 82.8% |

N/A = Fewer than five students

**Performance of Each Student Group on the ABCs End-of-Grade Tests**

Percentage of Students, Grouped by Gender, Ethnicity, and Other Factors, Who Passed BOTH the Reading and Math Tests

|                         | Male  | Female | White | Black | Hispanic | Amer. Indian | Asian | Pacific Islander | Two or More Races | E.D.  | N.E.D. | L.E.P. | Migrant Students | Students with Disabilities |
|-------------------------|-------|--------|-------|-------|----------|--------------|-------|------------------|-------------------|-------|--------|--------|------------------|----------------------------|
| <b>Our School</b>       | 71.3% | 77.6%  | 91.4% | 40.7% | 46.1%    | 83.3%        | 84.5% | N/A              | 70.8%             | 37.7% | 90.5%  | 15.8%  | N/A              | 35.0%                      |
| <b># of tests taken</b> | 488   | 540    | 558   | 204   | 115      | 6            | 97    | N/A              | 48                | 310   | 718    | 57     | N/A              | 180                        |
| <b>District</b>         | 72.0% | 76.5%  | 88.4% | 52.8% | 56.5%    | 67.4%        | 90.0% | 69.4%            | 77.7%             | 51.6% | 87.3%  | 33.0%  | N/A              | 41.8%                      |
| <b>State</b>            | 65.0% | 70.1%  | 79.3% | 49.4% | 55.1%    | 55.3%        | 79.1% | 64.1%            | 69.7%             | 54.2% | 84.1%  | 31.7%  | 42.8%            | 33.8%                      |

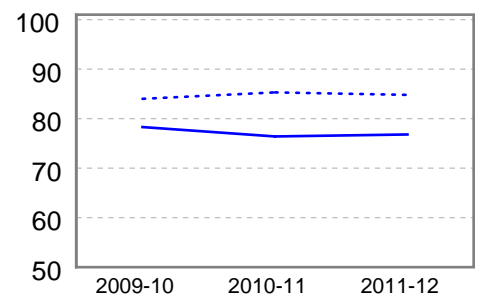
E.D. = Economically Disadvantaged  
N/A = Fewer than five students

N.E.D. = Not Economically Disadvantaged

L.E.P. = Limited English Proficiency

**Three-Year Trend of Student Performance on the ABCs End-of-Grade Reading and Math Tests**

Percentage of students at or above grade level for the past three years.



--- Math    — Reading

For information about the ABCs of Public Education and Annual Measurable Objectives (AMOs), visit <http://www.ncpublicschools.org/accountability/>

**Martin Middle**

**Diann Kearney, Principal**  
Diann Kearney, Prior Principal  
1701 Ridge Rd  
Raleigh, NC 27607 6737

(919) 881-4970  
Grades 6-8  
Magnet School  
Traditional Calendar

Wake County Schools

**SCHOOL PROFILE**

**School Size**

The total number of students in this school and the average number of students in schools with similar grade ranges at the district and state levels.

|  | OUR SCHOOL | DISTRICT | STATE |
|--|------------|----------|-------|
|  | 1,042      | 1,019    | 668   |

**Average Class Size**

The average number of students enrolled in a "typical" K-8 classroom.

\* Legislation mandates that class sizes for grades 4-12 are not restricted for 2011-12.

\* Due to data entry issues, some class sizes in select schools are unavailable for 2011-12.

|         | OUR SCHOOL | DISTRICT | STATE |
|---------|------------|----------|-------|
| Grade 6 | 24         | 24       | 22    |
| Grade 7 | 24         | 25       | 22    |
| Grade 8 | 23         | 25       | 21    |

**SAFE, ORDERLY AND CARING SCHOOLS**

**School Safety**

The number of acts of crime or violence reported below includes all acts occurring in school, at a bus stop, on a school bus, on school grounds, or during off-campus, school-sponsored activities.

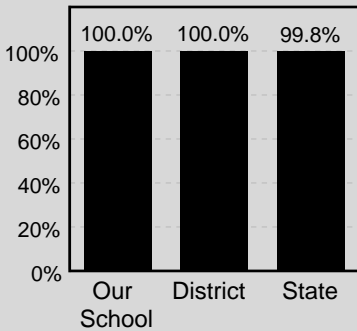
Out of 1,042 students in our school, there were a total of 3 act[s] of crime or violence.

**The number of acts of crime or violence reported per 100 students:**

|                   |      |
|-------------------|------|
| <b>OUR SCHOOL</b> | 0.29 |
| <b>DISTRICT</b>   | 0.97 |
| <b>STATE</b>      | 0.96 |

**Access to Technology**

Percentage of classrooms connected to the Internet



**Keeping you informed**

More information about your school is available on the NC School Report Cards website at: <http://www.ncreportcards.org>

**HIGH STUDENT PERFORMANCE, CONTINUED**

**School Performance**

Each year, schools in North Carolina may receive several designations based on their performance on the state's ABCs tests. These designations are awarded on the basis of the percentage of students performing at grade level and on whether students have learned as much as they are expected to learn in one year. The designations earned by your school are displayed below, followed by a brief description of each designation.

**Our School's Designation(s):** School of Distinction, High Growth

| DESIGNATION                | PERFORMANCE:<br>STUDENTS PERFORMING AT GRADE LEVEL                                | GROWTH:<br>LEARNING ACHIEVED<br>IN ONE YEAR |                 |                              | PERCENT OF SCHOOLS<br>WITH DESIGNATION |       |
|----------------------------|---|---|-----------------|------------------------------|--|-------|
|                            |   | High Growth                                 | Expected Growth | Expected Growth Not Achieved | DISTRICT                               | STATE |
| HONOR SCHOOL OF EXCELLENCE | At least 90% of students at grade level and the school met all AMO targets        |   |                 |                              | 18%                                    | 8%    |
| SCHOOL OF EXCELLENCE       | At least 90% of students at grade level   |   |                 |                              | 0%                                     | 0%    |
| SCHOOL OF DISTINCTION      | At least 80% of students at grade level   | ✓   |                 |                              | 36%                                    | 31%   |
| SCHOOL OF PROGRESS         | At least 60% of students at grade level   |   |                 |                              | 33%                                    | 41%   |
| NO RECOGNITION             | 60 to 100% of students at grade level   |   |                 |                              | 12%                                    | 12%   |
| PRIORITY SCHOOL            | 50 to 60% of students at grade level, OR Less than 50% of students at grade level |   |                 |                              | 0%                                     | 8%    |
| LOW PERFORMING             | Less than 50% of students at grade level  |   |                 |                              | 0%                                     | 0%    |

**Annual Measurable Objectives (AMOs)**

Per No Child Left Behind, North Carolina set AMOs in reading and mathematics based on 2010-11 data.

In any group where the percentage of students at a grade level is greater than 95% or less than 5%, the actual values are not displayed because of federal privacy regulations. In these cases the results are shown as >95% or <5% for the group.

Our school met 30 out of 37 performance targets.

**QUALITY TEACHERS**

|                   | Total Number of Classroom Teachers* | Fully Licensed Teachers | Classes Taught by Highly Qualified Teachers | Teachers with Advanced Degrees | National Board Certified Teachers* | Years of Teaching Experience |            |           | Teacher Turnover Rate |
|-------------------|-------------------------------------|-------------------------|---|--------------------------------|------------------------------------|------------------------------|------------|-----------|-----------------------|
|                   |                                     |                         |   |                                |                                    | 0-3 years                    | 4-10 years | 10+ years |                       |
| <b>Our School</b> | 79                                  | 98%                     | 100%  | 38%                            | 11                                 | 14%                          | 34%        | 53%       | 8%                    |
| <b>District</b>   | 64                                  | 99%                     | 99%   | 31%                            | 13                                 | 16%                          | 31%        | 53%       | 12%                   |
| <b>State</b>      | 43                                  | 96%                     | 99%   | 28%                            | 6                                  | 19%                          | 31%        | 50%       | 14%                   |

\* The total number of teachers in this school and the average number of teachers in schools with similar grade ranges at the district and state level.

